

# Expert Group on Adaptation to Climate Change

First meeting, 6—7 September 2017

**Robert Jandl**  
**Austria**



*How do you contribute with your work in your country/organization to climate change adaptation activities?*

National campaign Forest Section of Ministry  
“The use of wood is good for the climate –  
We make our forest climate fit!”



Information &  
Communication

awareness raising

Pilot Projects

activities on the ground

Research &  
Education

knowledge transfer

# *How do you contribute with your work in your country/organization to climate change adaptation activities?*

National campaign Forest Section of Ministry  
**“The use of wood is good for the climate –  
We make our forest climate fit!”**



## Information & Communication

awareness raising

- Press Relation
- Advertisements in Print Media
- Media-cooperation (print, online media, radio, TV)
- Coverage of events
- Compilation of professional content
- Movie “GENial”
- Online & Social Media

## Pilot Projects

activities on the ground

- Cooperation with municipalities (2.100)
  - “wood friendliest municipality”
  - Climate Adaptation Forest-App
- Wood mobilization model regions
- “Demo sites for management (afforestation, thinning, tendering etc)
- Fostering forest management plans

## Research & Education

knowledge transfer

- Climate change in education and training courses within the forest / timber sector
- Basic data and data management with regard to forest and climate change
- Research on Forests and Climate Change
  - Silviculture
  - Genetics
  - Resilience
  - Behaviour of forest owners

# *How do you contribute with your work in your organization to climate change adaptation activities?*



- **Silviculture**: tree species research, experimental forest management
- **Forest soil research**: sink/source of greenhouse gases, drought
- **Forest genetics**: genetical amplitude of tree species
- **Forest entomology**: monitoring and counter measures pests & pathogens
- **Natural hazards**: stabilization of forest areas / protection forests
- **Forest inventory**: provision of base data on carbon stocks

# *How do you contribute with your work in your organization to climate change adaptation activities?*



- **Silviculture**: disturbance, experimental forest management
- **Forest entomology**: monitoring and counter measures pests & pathogens
- **Natural hazards**: stabilization of forest areas / protection forests

Special Report APCC 2014  
Interdisciplinary networking  
Collaboration  
Science Plan

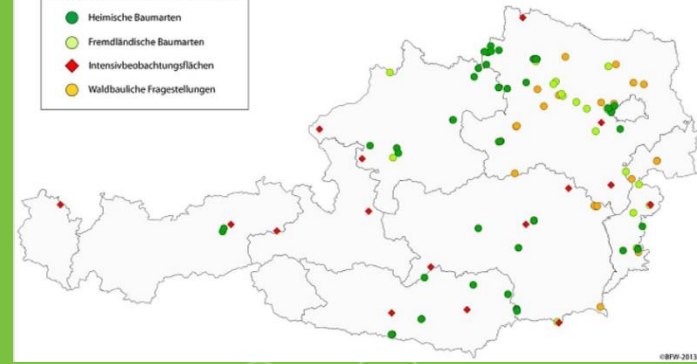




# Successful example of climate change adaptation measures implemented in Austria

Versuchsflächen  
Institut für Waldwachstum und Waldbau

- Heimische Baumarten
- Fremdländische Baumarten
- ◆ Intensivbeobachtungsflächen
- Waldbaulche Fragestellungen



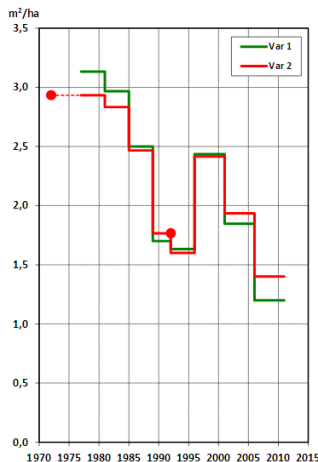
Work in progress based on **long-term forest management experiments**

Afforestation projects high/low elevation

Thinning / spacing experiments

Comparison of performance of tree species

Subsidies for mixed species forests



**Forest**  
Europe growing life

# National strategy on adaptation of forests to climate change

MINISTERIUM  
FÜR EIN  
LEBENSWEITES  
ÖSTERREICH

bmlfuw.gv.at

**Sustainable use of forests**  
**Forests and climate change**  
**Productivity of forests**  
**Biodiversity**  
**Protection forests**

ÖSTERREICHISCHE  
WALDSTRATEGIE 2020+



Implementation  
Indicators

[https://www.bmlfuw.gv.at/forst/oe-sterreich-wald/waldstrategie-2020/waldstrategie\\_detail.html](https://www.bmlfuw.gv.at/forst/oe-sterreich-wald/waldstrategie-2020/waldstrategie_detail.html)

Chair  
Minister

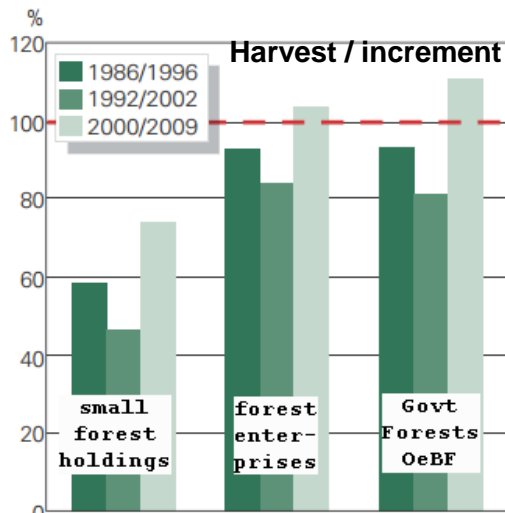
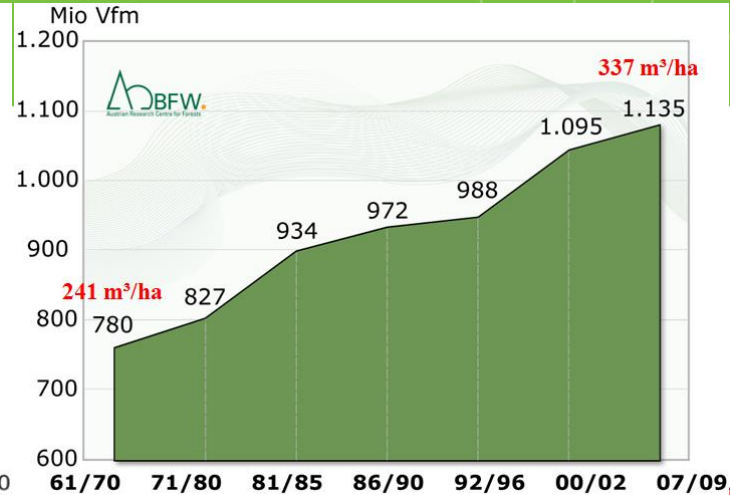
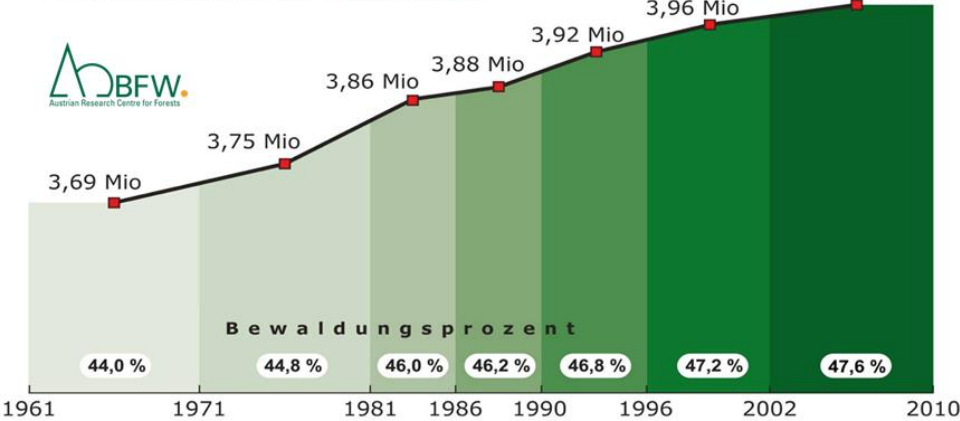


85 participating  
organizations



# major challenges related to climate change and forests in Austria

Increase in forest area **+ 300.000 ha**



**Buchdrucker 2016**  
*ips typographus*

- > 500 ha
- 100 - 500 ha
- < 100 ha
- ▲ Zunahme increase
- ▲ gleichbleibend constant
- ▼ Abnahme decrease
- ⊗ Intensität hoch intensity high
- ⊗ Intensität mittel intensity intermediate
- ⊗ Intensität gering intensity low
- keine Schädigung no damage
- ? keine Angabe no data

